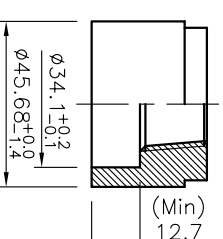


DESIGN DATA			
CODE	KEPIC MGE & ASME B31.1		
UNIT	mm		
ENCLOSURE	WEATHER PROOF		IP65
ORDERING CODE	PROCESS TEMP (CONTACT RATING)		SNAP SWITCH MAT'L
1	Max. 120°C (1A 120V AC / 0.6A 125V DC)		PC, PHENOL 304SS
2	Max. 230°C (5A 250V AC / 0.5A 125V DC)		PC, CERAMIC 304SS
3	Max. 400°C (1A 250V AC / 1A 30V DC)		PC, CERAMIC 304SS
4	Max. 230°C (15A 250V AC / 1A 125V DC)		PC, CERAMIC 304SS
	HERMETICAL SEAL TYPE		

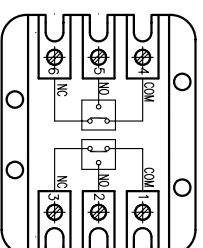
## NOTES

1. REFER TO INSTALLATION MANUAL WHEN YOU SET IT UP
2. CABLE SIZE : 14 AWG.
3. DEAD BAND IS 15mm FIXEDLY
4. HEAD ROOM OF 300mm MUST BE SECURED ABOVE THE HEAD FOR INSTALLATION / REMOVAL AND MAINTENANCE
5. CABLE CONNECTION IN TERMINAL PART VIA CLAMPED RING TYPE
6. PAINTING SPEC : SEJUN STD.
7. TEST FOR WELDING : HYDRO+PT TEST
8. CHAMBER OPERING INFORMATION  
SMC-750H-A-1-A-1-A-1-A-1-A-1-A

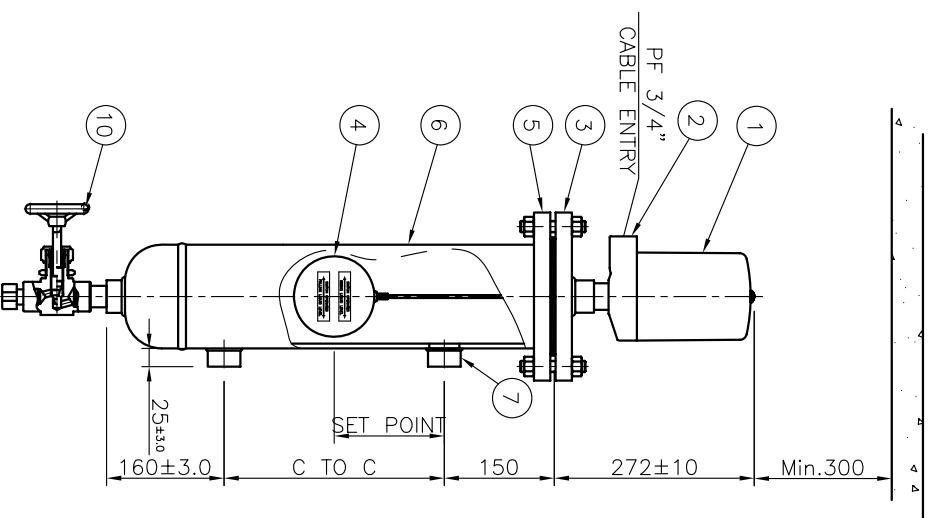
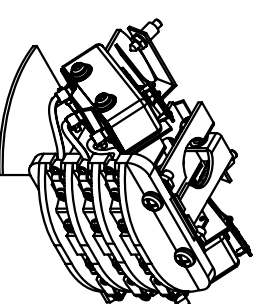
## PROCESS CONNECTION



## WIRING DIAGRAM



(8) SNAP SWITCH



NO.	TAG. NO.	FLUID(UPPER/LOWER)	OPER. PRESS. MAX.(Barg)	OPER. TEMP. MAX.(°C)	RATING	SET POINT	C TO C (MEASURING RANGE)	CONNECTION	Q'TY
1	-	-	-	-	150#	150	-	1"SW 3000# (SIDE-SIDE)	- SETS

TOTAL Q'TY : - SETS

	OR	OPENS ON RISING LEVEL
	CR	CLOSES ON RISING LEVEL
	OF	OPENS ON FALLING LEVEL
	CF	CLOSES ON FALLING LEVEL
V	SWITCH ACTION	

REV.	DESCRIPTION	DATE	DESIGNED	REVIEWED	APPROVED
△					
△					
△					
△					
△					

TITLE				VERTICAL FLOAT TYPE LEVEL SWITCH SMC-75F-1-A-1-A-1-A-1 ASSEMBLY DRAWING	
MANUFACTURER					
 <b>Seodin Instech Co., Ltd.</b>					
SCALE		BSP CODE		Work Order No.	
		-		-	
DWG. NO.		REV.			
SJ-M015-DWG-AP301-B					